



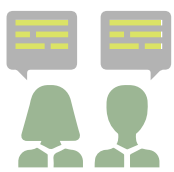
WISCONSIN CPCP

CHILD PSYCHIATRY CONSULTATION PROGRAM

WI CPCP BY THE NUMBERS

The Wisconsin Child Psychiatry Consultation Program (WI CPCP) is a state- and federally funded program for primary care providers (PCPs) designed to improve mental health care for children and adolescents. This statewide program is brought to you by the Wisconsin Department of Health Services (DHS) in partnership with the Medical College of Wisconsin (MCW).

Provider Engagement | July 2020 – June 2021



1,145

WI CPCP
consults to
providers

561

Hours of provider
education completed

278

Providers who joined
WI CPCP this year



*Services offered to
primary care providers*

EDUCATION

The WI CPCP offers Continuing Medical Education (CME) online education, case studies and practice application, and mental health conferences.

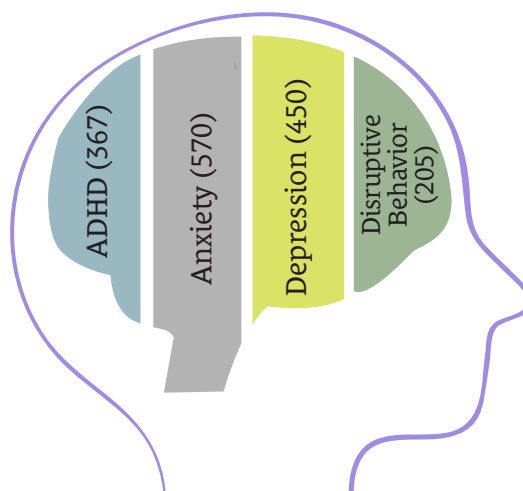
CONSULTATION

The WI CPCP team is available to answer questions relating to pediatric mental health by phone or email Monday through Friday, 8 a.m.–5 p.m.

RESOURCE COORDINATION

Resource support in ensuring timely referrals to appropriate services within local communities.

Frequent topics for which providers request consults



Top medicine-related provider questions

- 465** side effects
- 451** considering different medication
- 214** medication discontinuation
- 91** medication decrease

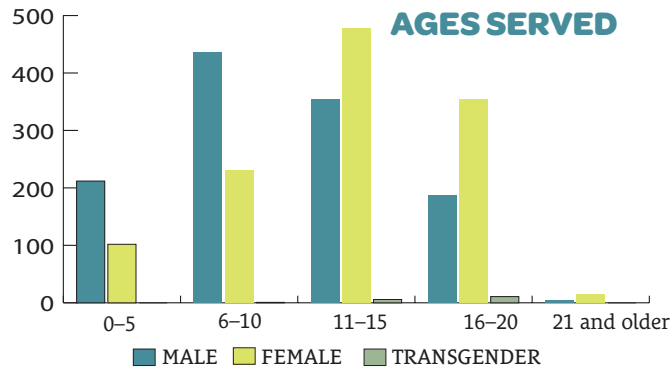
To obtain the dedicated email address and phone number for WI CPCP and to gain access to online CE modules, please visit the WI CPCP website at **WICPCP.org** and fill out the interest inquiry survey located on the "Join" tab at the top of the home page.

WI CPCP BY THE NUMBERS

Provider Participation | Cumulative Data

6,418

Total consults since program inception

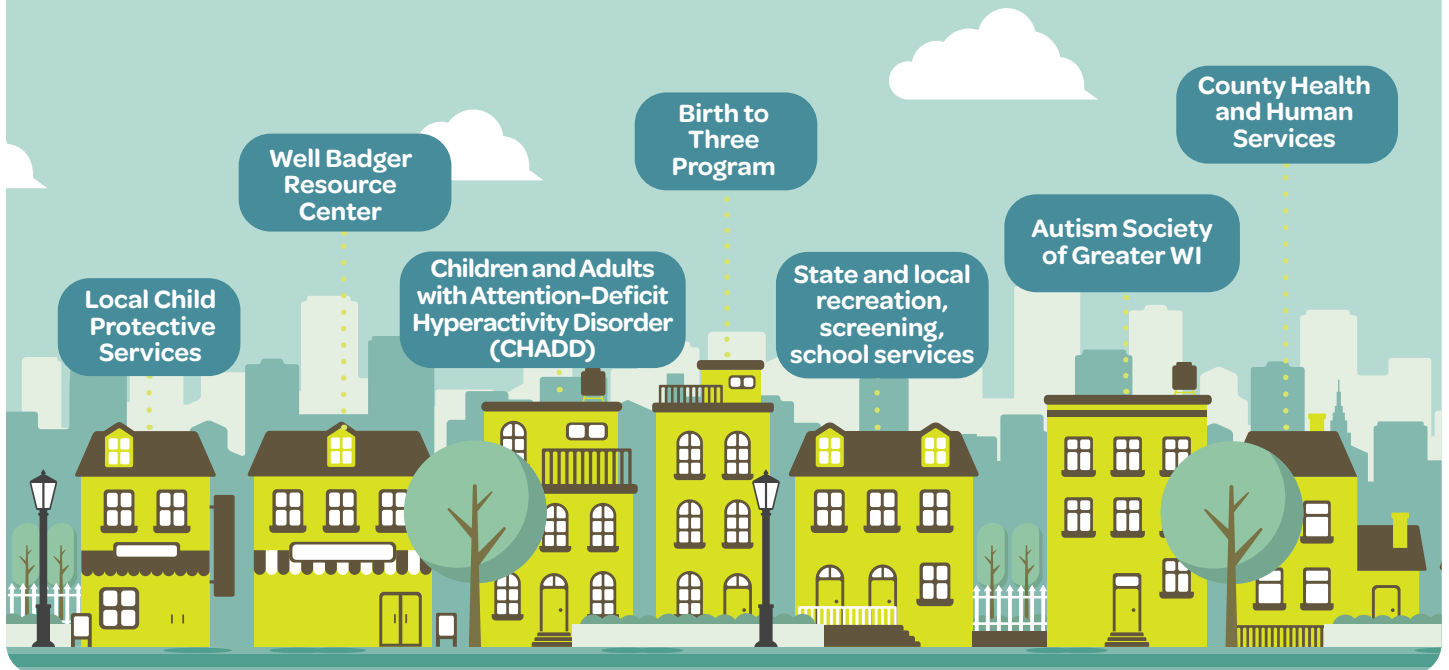


1,302

Total participating providers



COMMUNITY RESOURCES OFTEN RECOMMENDED TO PROVIDERS



WI CPCP TEAM

Mental Health Clinicians

Robert Chayer, MD
 Gabriella Hangiandreou, MD
 Matt Jandrisevits, PhD
 Martha Karlstad, MD
 Rosa Kim, MD
 Jon Lehrmann, MD
 Colleen Manak, MD
 Scott Sandage, DO
 Nisha Shah, MD

Program Administrator

Scott Belanger

DHS Contract Administrator

Leah Ludlum

Data Evaluator

Michelle Broaddus, PhD

Program Manager

Elizabeth Nelson

Program Coordinators

Jonathan Blake
 Melissa Hayes
 Sara Herr
 Kristen Krause
 Christina Lium
 Esmirna Peralta
 Grace Weber



For more information on WI CPCP, please visit WICPCP.org



WISCONSIN DEPARTMENT OF HEALTH SERVICES

P-01847 (03/2022)

This statewide program is brought to you by the Wisconsin Department of Health Services in partnership with the Medical College of Wisconsin.

This fact sheet is supported in part by funding from the Health Resources and Services Administration (HRSA) of the U.S. Department of Health and Human Services (HHS) as part of a 5-year cooperative agreement and in part by the Department of Health Services, Wisconsin Act 127. The contents are those of the author(s) and not necessarily represent the official views of, nor an endorsement by, HRSA, HHS, or the U.S. Government.